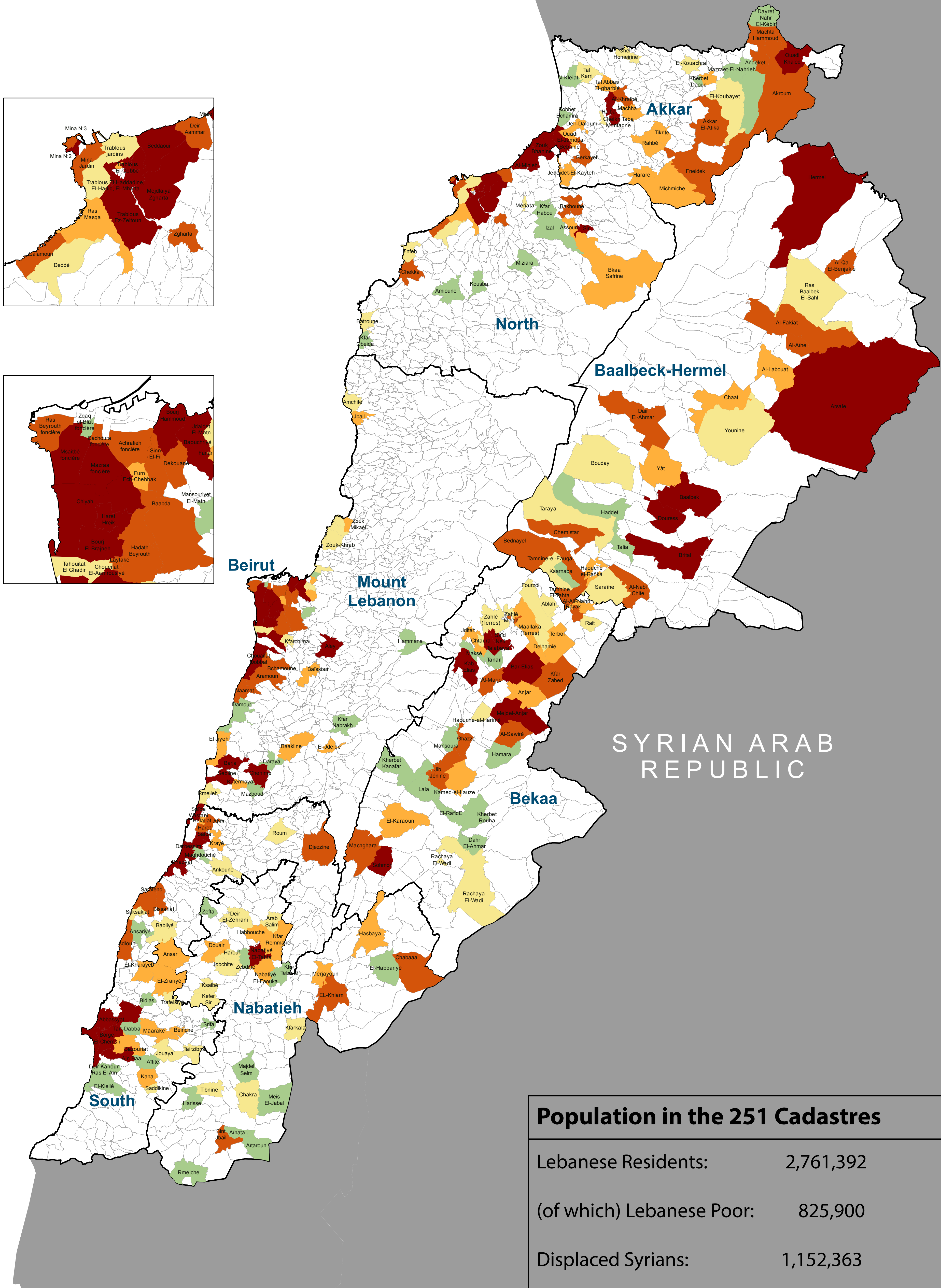


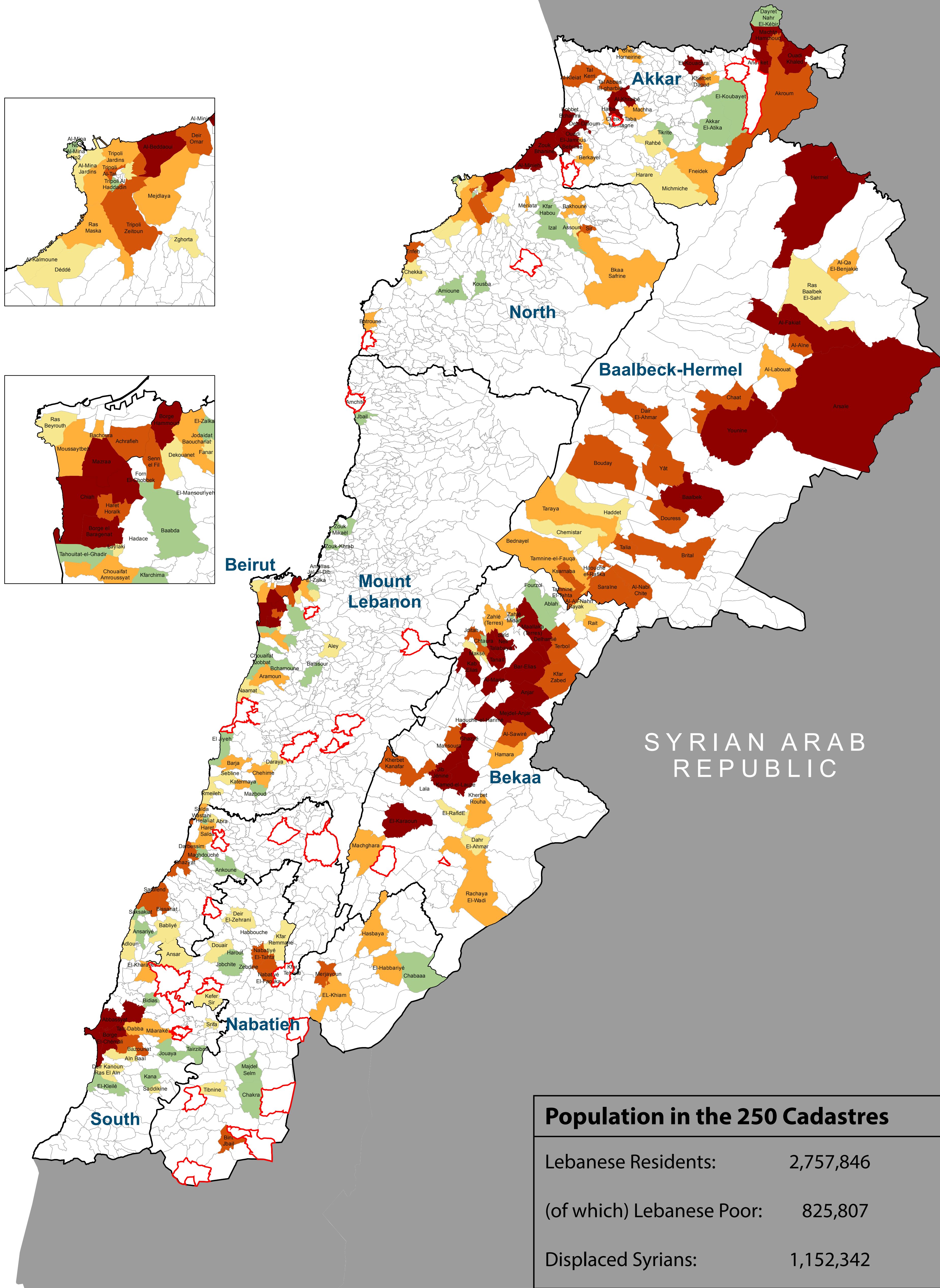
# Convergence Maps - July 2015



## Most Vulnerable Cadastres in Lebanon (251 cadastres) March 2015



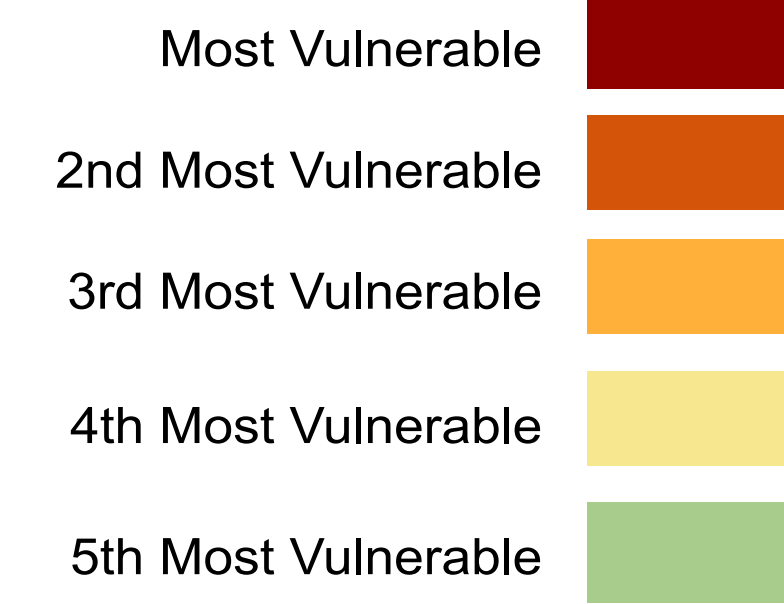
## ActivityInfo - Accumulated Report Count per Cadastre July 2015



Calculation of the Most Vulnerable Localities is based on the following datasets:  
1 - Multi-Deprivation Index (MDI)  
2 - Lebanese population dataset  
3- Displaced Syrian population figures

Map Production Date: 28 August 2015  
For GIS and Mapping: hany.imam@one.un.org

### VULNERABILITY by Quantile



### ACTIVITY REPORTS by Quantile

